

Windows Vista – Ethernet Setup Guide

Basic setup information for your Internet connection

These instructions **only** apply for a PC or Notebook running Windows Vista

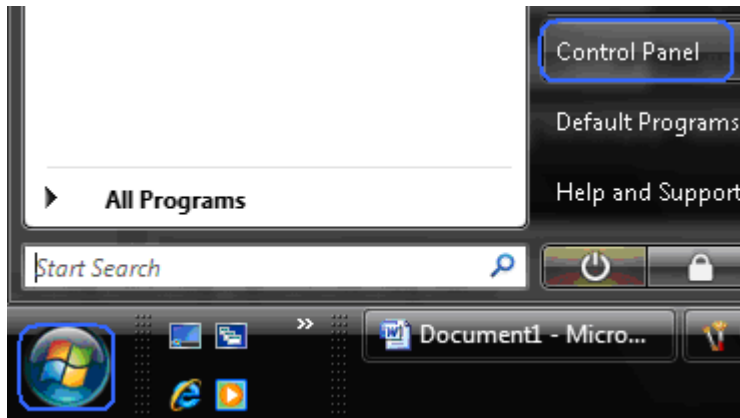
These instructions should also work equally as well for **Mozilla Firefox** OR **Microsoft Internet Explorer** versions 6 and above

1) Set up your Physical Connection

- Be sure that your computer is connected to the network port in the wall. This port looks like a large phone jack. The connecting cable is commonly referred to as a **network, Ethernet, or patch cable**, and needs to be connected securely (so that it “clicks”).
- Most NICs (Network Interface Cards) have “link lights” that announce that they have connectivity. Check for these lights next to the jack on your computer.

2) Set up your Local Area Connection for DHCP

Click on your **Windows Button** and click on **Control Panel**.



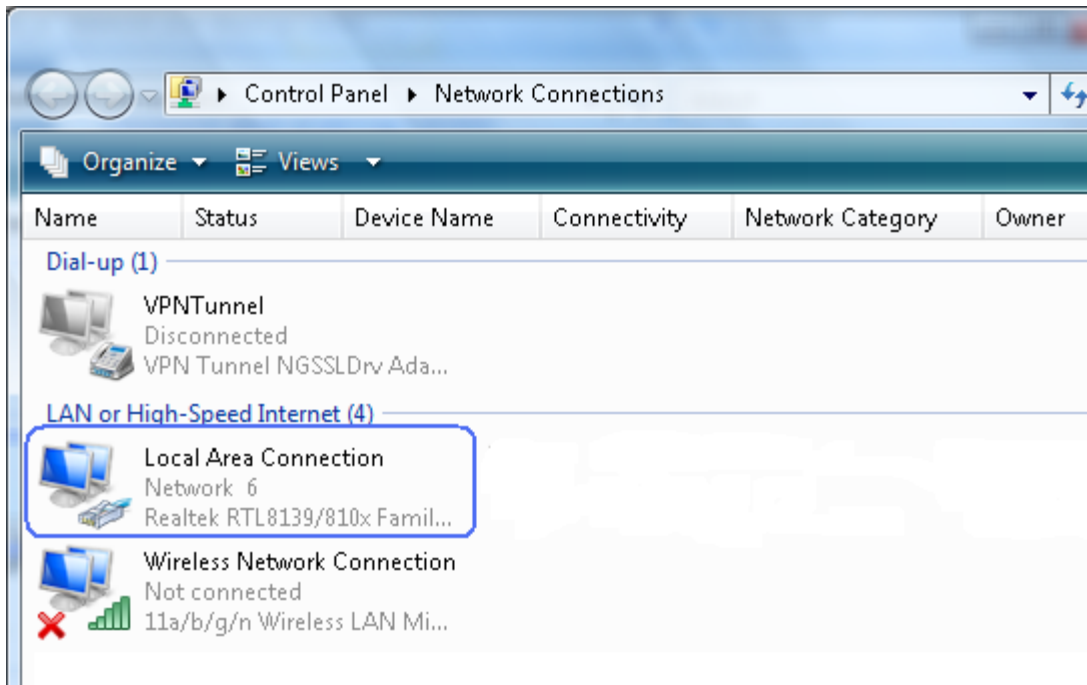
Click on **Network and Sharing Center**



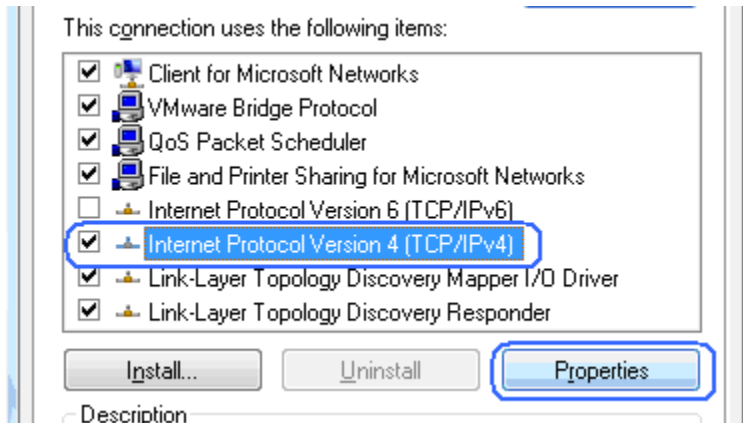
Click on **Manage network connections**.



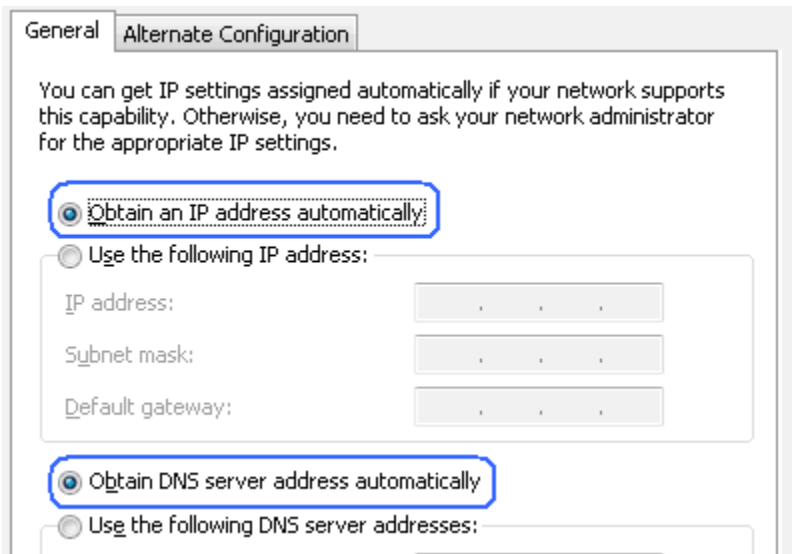
Right-click on Local Area Connection, and choose **Properties**



Highlight **Internet Protocol Version 4** and then click on the **Properties** button



Make sure that both **Obtain an IP address automatically** and **Obtain DNS server address automatically** are selected.



1. Select **Obtain an IP address automatically**
2. Select **Obtain DNS server address automatically**
3. Click **OK** as needed to complete the setup process and close all windows.

To test your setup, open an Internet browser and type the following address into the address bar: <http://www.time.gov> and select the correct time zone.

If you are still having difficulty connecting to the internet, please refer to the following sources: **Contacting OFM Computer Systems, Inc. for support**

Phone: **434-422-9301** (this is a local call for Charlottesville Residents)

Email: woodard@charlottesvilleisp.com

Twitter: <http://twitter.com/ofmwoodard> (Network Status updated here)